

ODM Quality Report

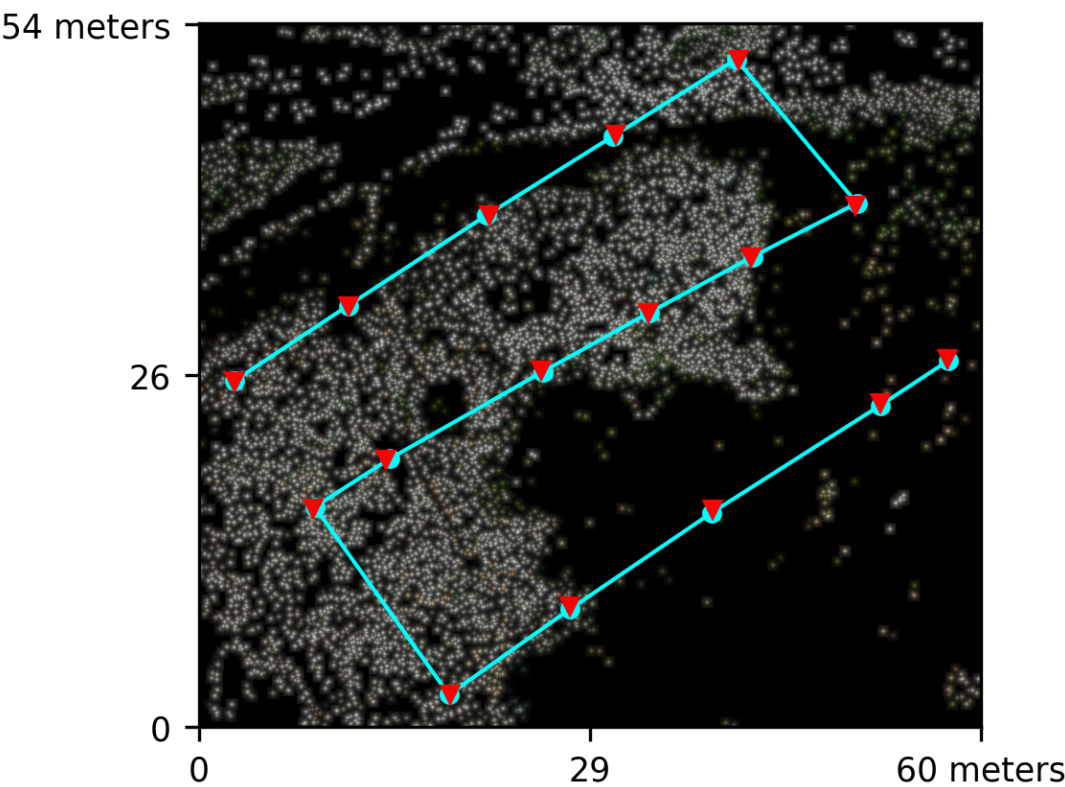
Processed with ODM version 3.1.4

Dataset Summary

Date	09/05/2023 at 17:58:26
Area Covered	0.002644 km²
Processing Time	5.0m:3.0s
Capture Start	30/04/2023 at 09:13:22
Capture End	30/04/2023 at 09:14:29

Processing Summary

Reconstructed Images	16 over 16 shots (100.0%)
Reconstructed Points (Sparse)	14062 over 14234 points (98.8%)
Reconstructed Points (Dense)	1,950,983 points
Average Ground Sampling Distance (GSD)	2.2 cm
Detected Features	11,177 features
Reconstructed Features	2,554 features
Geographic Reference	GPS
GPS errors	0.40 meters

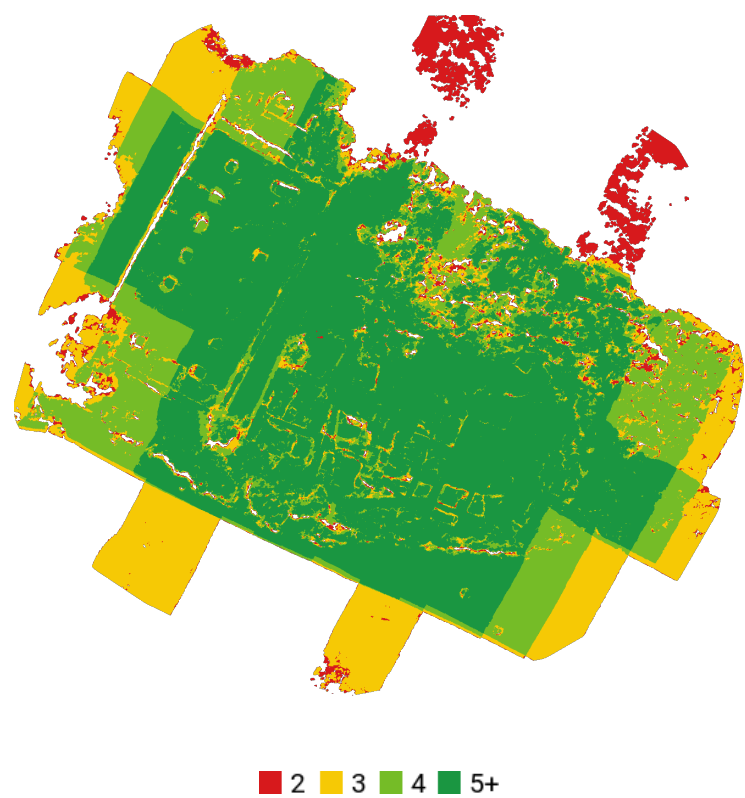


Previews



Orthophoto

Survey Data



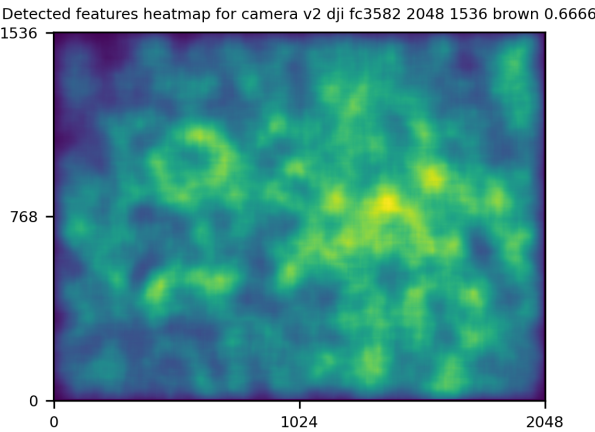
GPS/GCP/3D Errors Details

GPS	Mean	Sigma	RMS Error
X Error (meters)	0.004	0.123	0.123
Y Error (meters)	0.034	0.125	0.129
Z Error (meters)	-0.018	0.410	0.411
Total			0.404

3D	Mean	Sigma	RMS Error
X Error (meters)	0.008	0.008	0.011
Y Error (meters)	0.009	0.008	0.012
Z Error (meters)	0.017	0.022	0.028
Total			0.022

	Absolute	Relative
Horizontal Accuracy CE90 (meters)	0.241	0.024
Vertical Accuracy LE90 (meters)	0.693	0.044

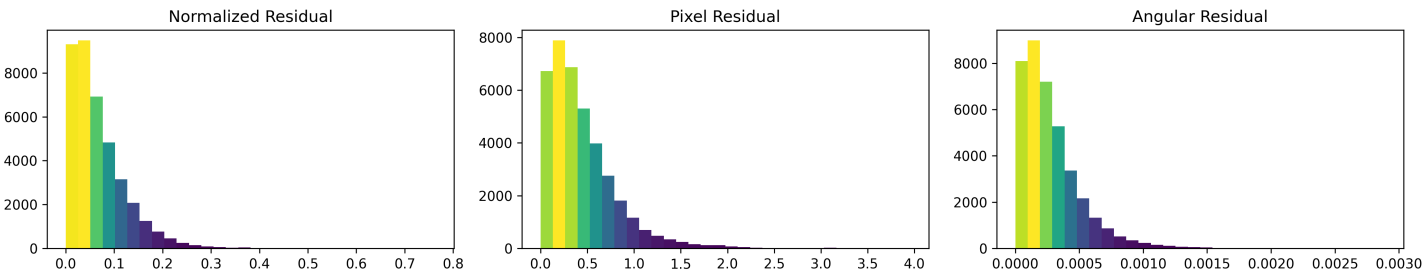
Features Details



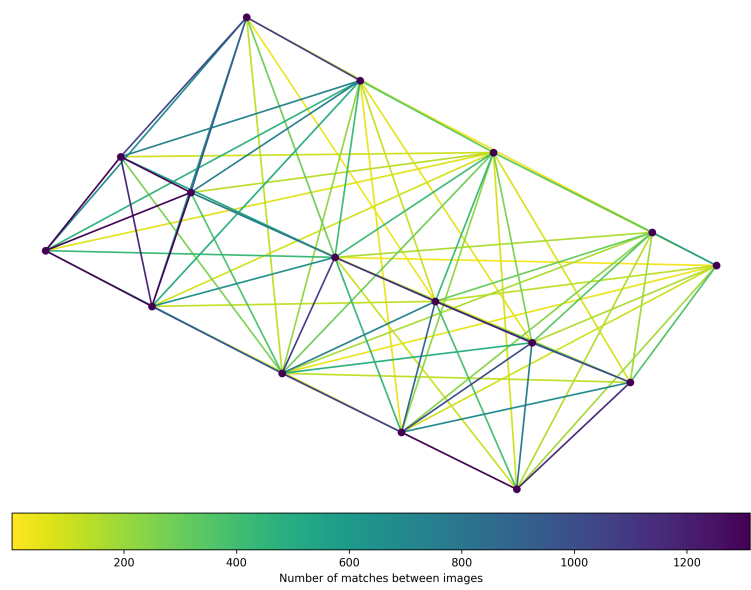
	Min.	Max.	Mean	Median
Detected	10070	12517	11158	11177
Reconstructed	863	3833	2437	2554

Reconstruction Details

Average Reprojection Error (normalized / pixels / angular)	0.07 / 0.44 / 0.00028
Average Track Length	2.77 images
Average Track Length (> 2)	3.99 images



Tracks Details



Length	2	3	4	5	6	7	8	9	10
Count	8602	2663	1322	760	415	199	78	20	3

Camera Models Details

v2 dji fc3582 2048 1536 brown 0.6666

	k1	k2	k3	p1	p2	focal	aspect_ratio	cx	cy
Initial	0.0000	0.0000	0.0000	0.0000	0.0000	0.6667	1.0000	0.0000	0.0000
Optimized	0.0330	-0.0616	0.0258	-0.0032	-0.0035	0.6527	1.0000	0.0018	-0.0072

