

ODM Quality Report

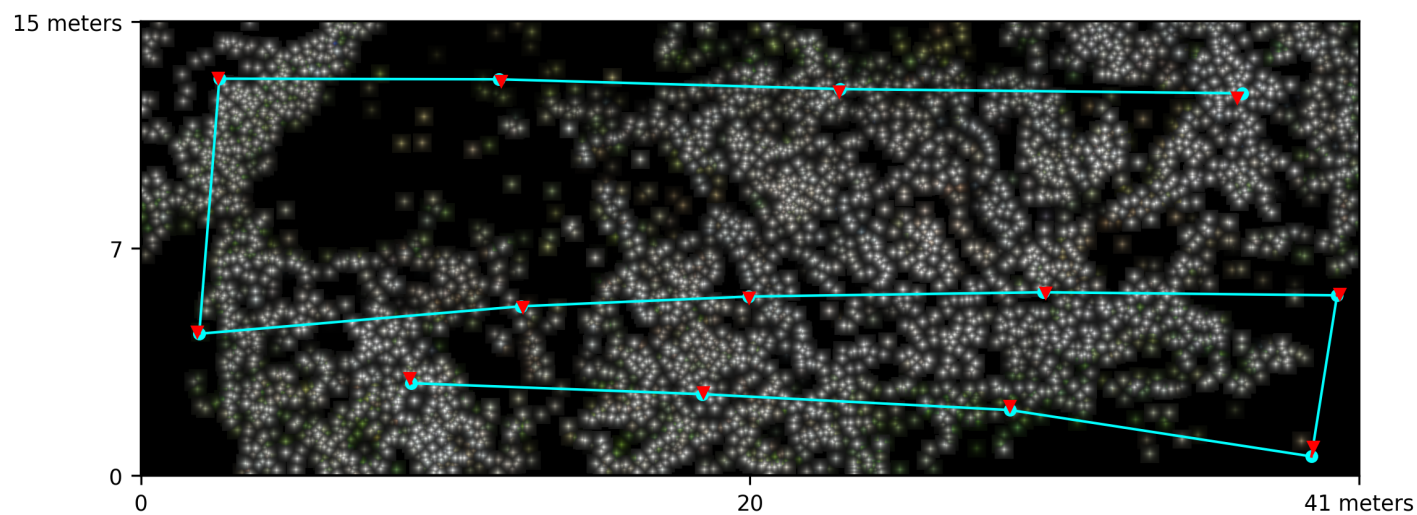
Processed with ODM version 3.1.4

Dataset Summary

Date	09/05/2023 at 17:32:51
Area Covered	0.000485 km²
Processing Time	3.0m:19.0s
Capture Start	30/04/2023 at 09:06:29
Capture End	30/04/2023 at 09:07:29

Processing Summary

Reconstructed Images	13 over 13 shots (100.0%)
Reconstructed Points (Sparse)	9342 over 9481 points (98.5%)
Reconstructed Points (Dense)	1,700,805 points
Average Ground Sampling Distance (GSD)	1.5 cm
Detected Features	10,954 features
Reconstructed Features	1,861 features
Geographic Reference	GPS
GPS errors	0.34 meters

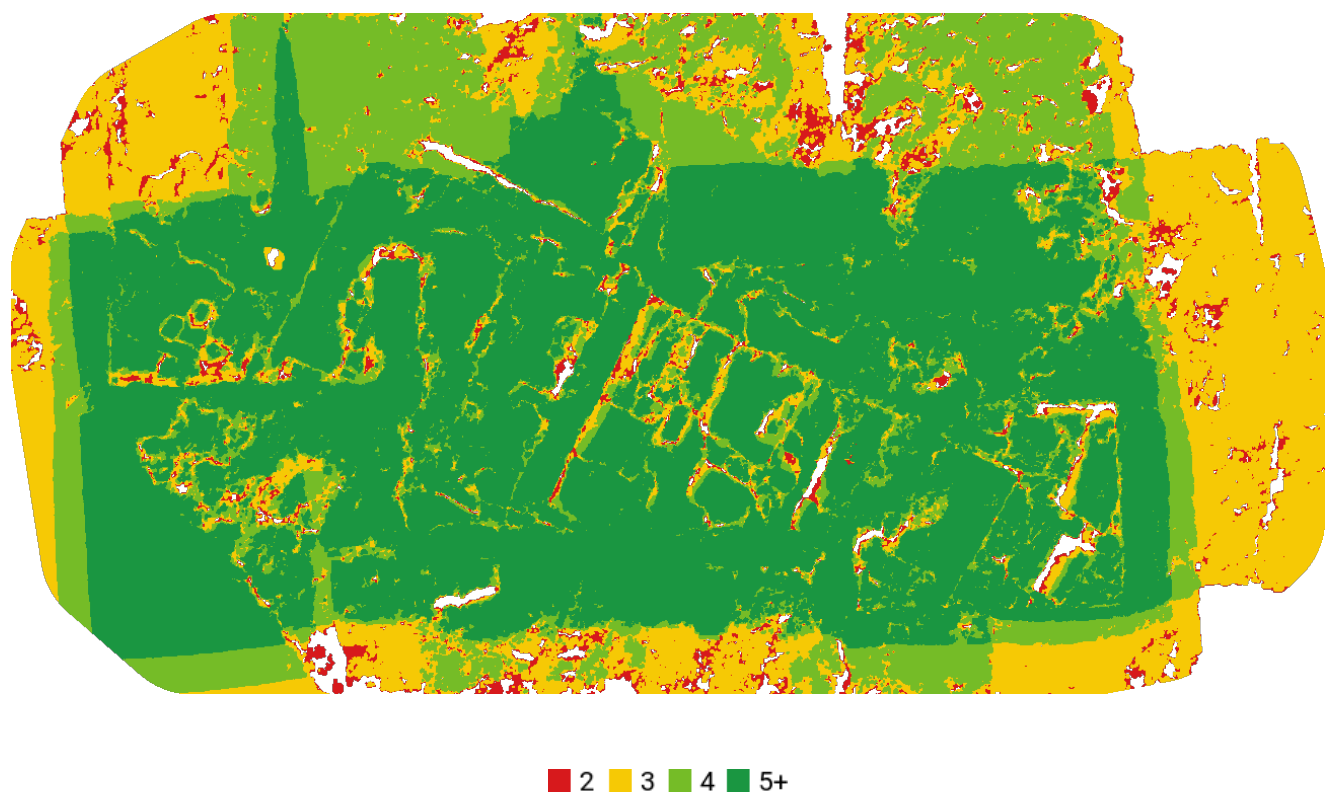


Previews



Orthophoto

Survey Data



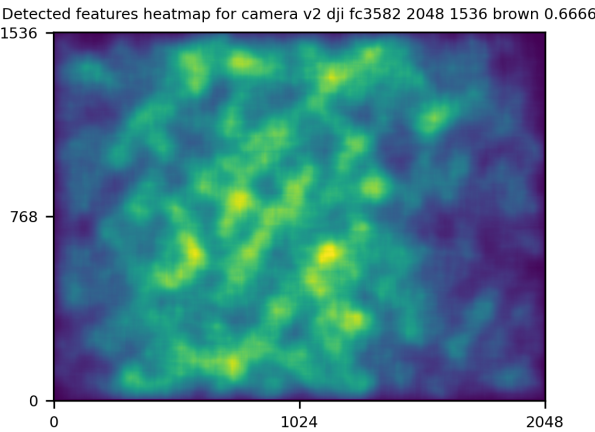
GPS/GCP/3D Errors Details

GPS	Mean	Sigma	RMS Error
X Error (meters)	-0.005	0.071	0.071
Y Error (meters)	0.029	0.112	0.116
Z Error (meters)	-0.012	0.333	0.333
Total			0.340

3D	Mean	Sigma	RMS Error
X Error (meters)	0.007	0.011	0.013
Y Error (meters)	0.007	0.008	0.011
Z Error (meters)	0.019	0.023	0.029
Total			0.022

	Absolute	Relative
Horizontal Accuracy CE90 (meters)	0.194	0.022
Vertical Accuracy LE90 (meters)	0.462	0.045

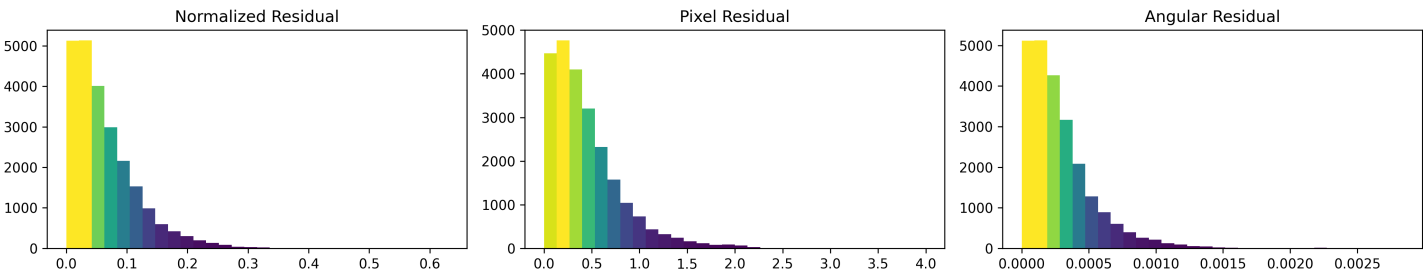
Features Details



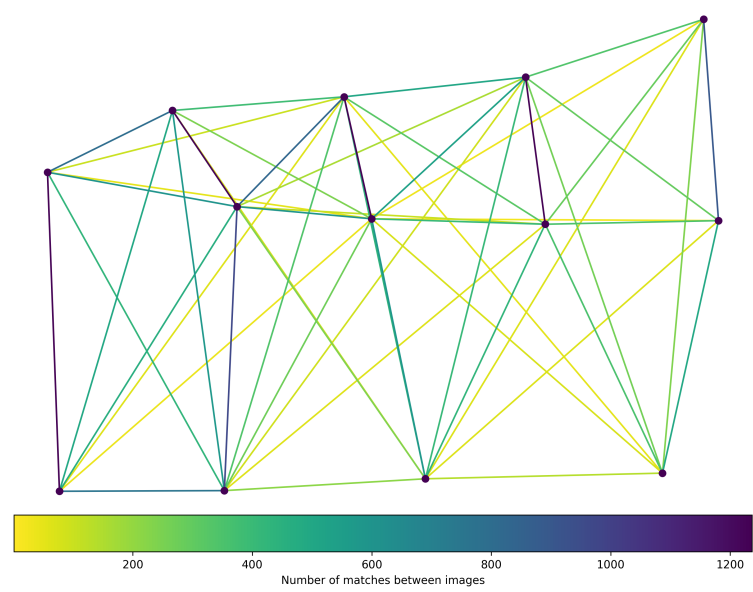
	Min.	Max.	Mean	Median
Detected	10003	12420	11137	10954
Reconstructed	786	2694	1839	1861

Reconstruction Details

Average Reprojection Error (normalized / pixels / angular)	0.06 / 0.45 / 0.00029
Average Track Length	2.56 images
Average Track Length (> 2)	3.73 images



Tracks Details



Length	2	3	4	5	6	7	8
Count	6322	1598	832	430	124	33	3

Camera Models Details

v2 dji fc3582 2048 1536 brown 0.6666

	k1	k2	k3	p1	p2	focal	aspect_ratio	cx	cy
Initial	0.0000	0.0000	0.0000	0.0000	0.0000	0.6667	1.0000	0.0000	0.0000
Optimized	0.0112	-0.0368	0.0039	-0.0006	-0.0034	0.6625	1.0000	0.0017	-0.0035

