

# ODM Quality Report

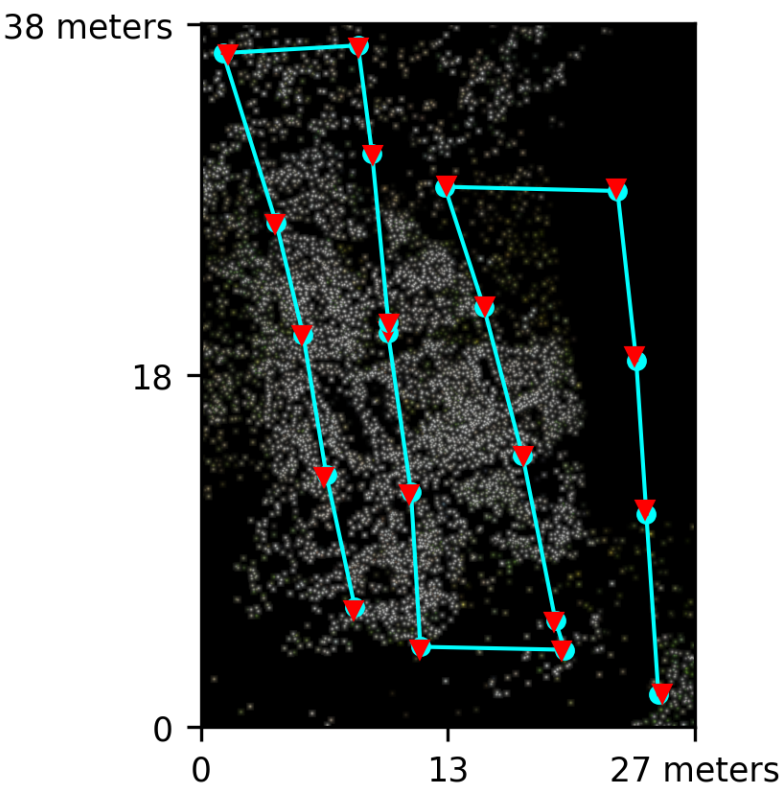
Processed with ODM version 3.1.4

## Dataset Summary

Date	09/05/2023 at 17:42:29
Area Covered	0.000815 km²
Processing Time	3.0m:52.0s
Capture Start	30/04/2023 at 09:09:07
Capture End	30/04/2023 at 09:10:35

## Processing Summary

Reconstructed Images	20 over 21 shots (95.2%)
Reconstructed Points (Sparse)	10822 over 11181 points (96.8%)
Reconstructed Points (Dense)	2,328,275 points
Average Ground Sampling Distance (GSD)	1.1 cm
Detected Features	10,591 features
Reconstructed Features	1,057 features
Geographic Reference	GPS
GPS errors	0.30 meters

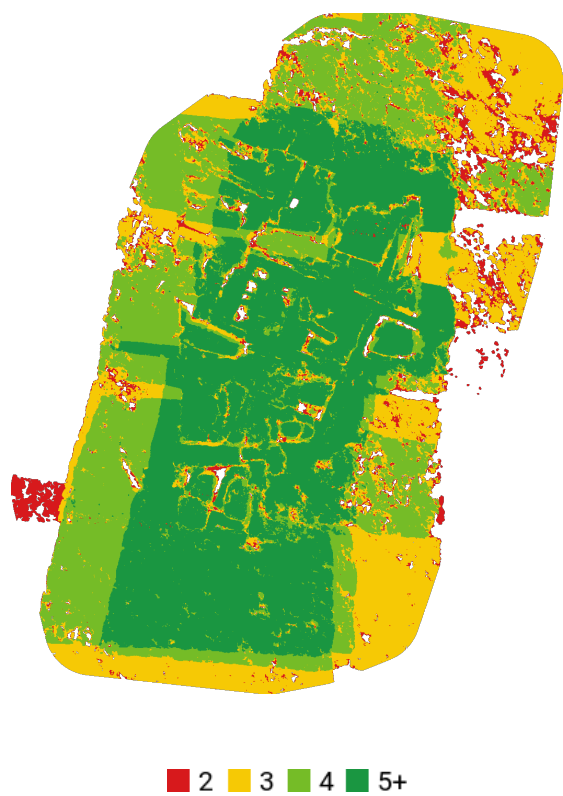


Previews



Orthophoto

# Survey Data



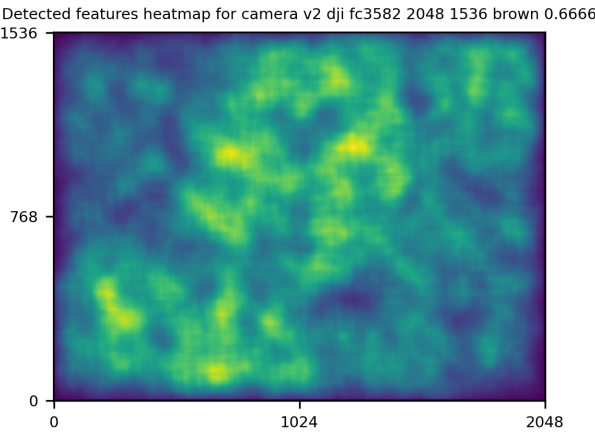
## GPS/GCP/3D Errors Details

GPS	Mean	Sigma	RMS Error
X Error (meters)	0.009	0.104	0.104
Y Error (meters)	0.002	0.109	0.109
Z Error (meters)	-0.002	0.323	0.323
Total			0.299

3D	Mean	Sigma	RMS Error
X Error (meters)	0.009	0.018	0.020
Y Error (meters)	0.006	0.010	0.012
Z Error (meters)	0.019	0.031	0.036
Total			0.023

	Absolute	Relative
Horizontal Accuracy CE90 (meters)	0.227	0.024
Vertical Accuracy LE90 (meters)	0.387	0.042

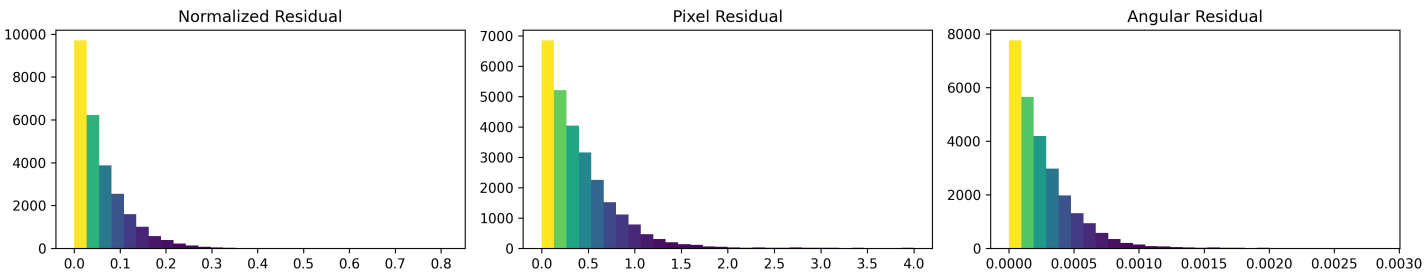
# Features Details



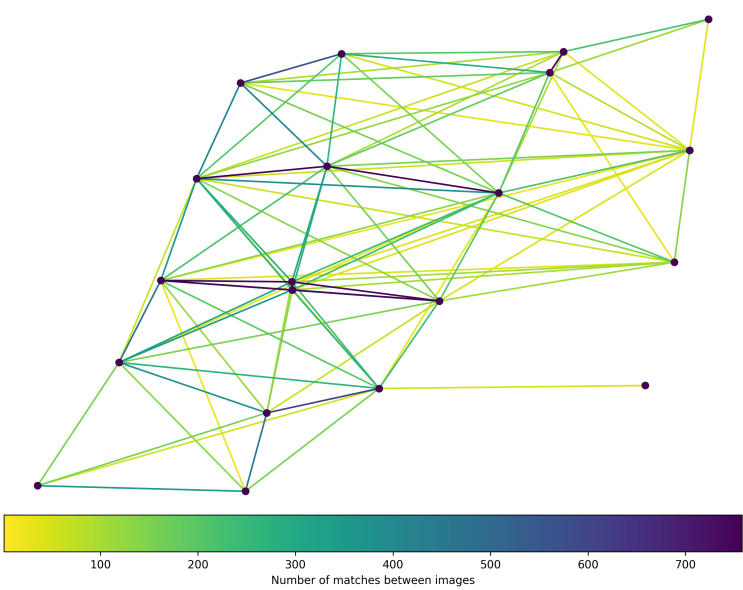
	Min.	Max.	Mean	Median
Detected	10029	12756	10835	10591
Reconstructed	49	4763	1362	1057

# Reconstruction Details

Average Reprojection Error (normalized / pixels / angular)	0.06 / 0.42 / 0.00026
Average Track Length	2.52 images
Average Track Length (> 2)	3.79 images



# Tracks Details



Length	2	3	4	5	6	7	8	9
Count	7686	1781	713	325	197	95	20	5

# Camera Models Details

v2 dji fc3582 2048 1536 brown 0.6666

	k1	k2	k3	p1	p2	focal	aspect_ratio	cx	cy
Initial	0.0000	0.0000	0.0000	0.0000	0.0000	0.6667	1.0000	0.0000	0.0000
Optimized	0.0167	-0.0300	-0.0015	-0.0021	-0.0002	0.6636	1.0000	-0.0049	-0.0007

