

# ODM Quality Report

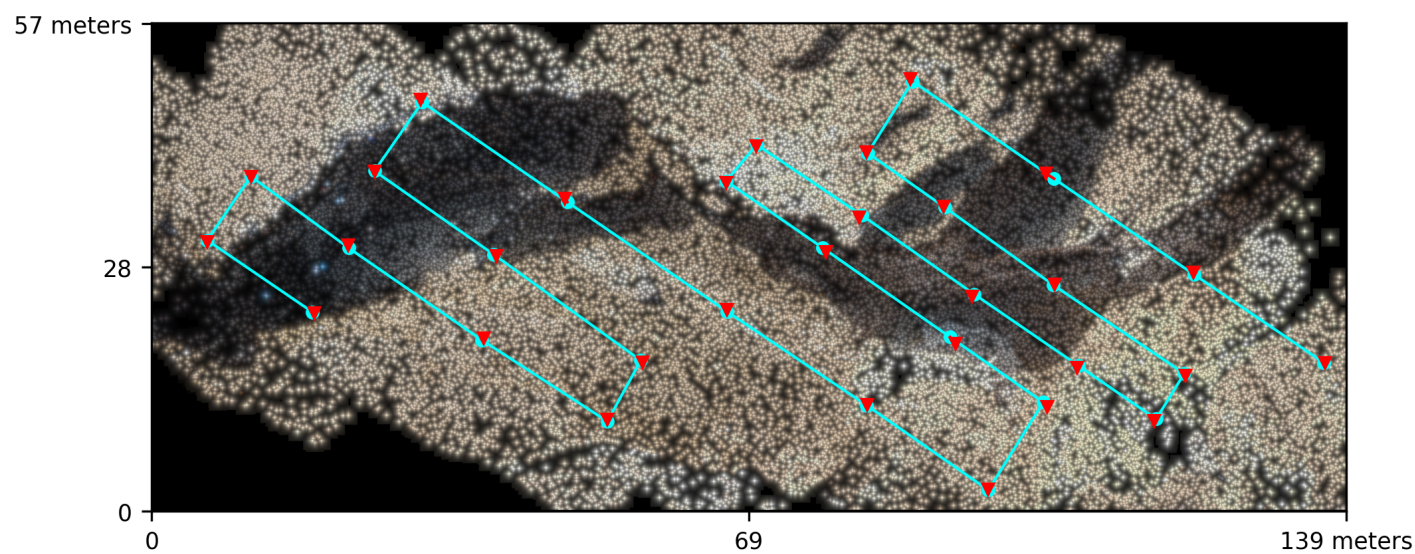
Processed with ODM version 3.0.1

## Dataset Summary

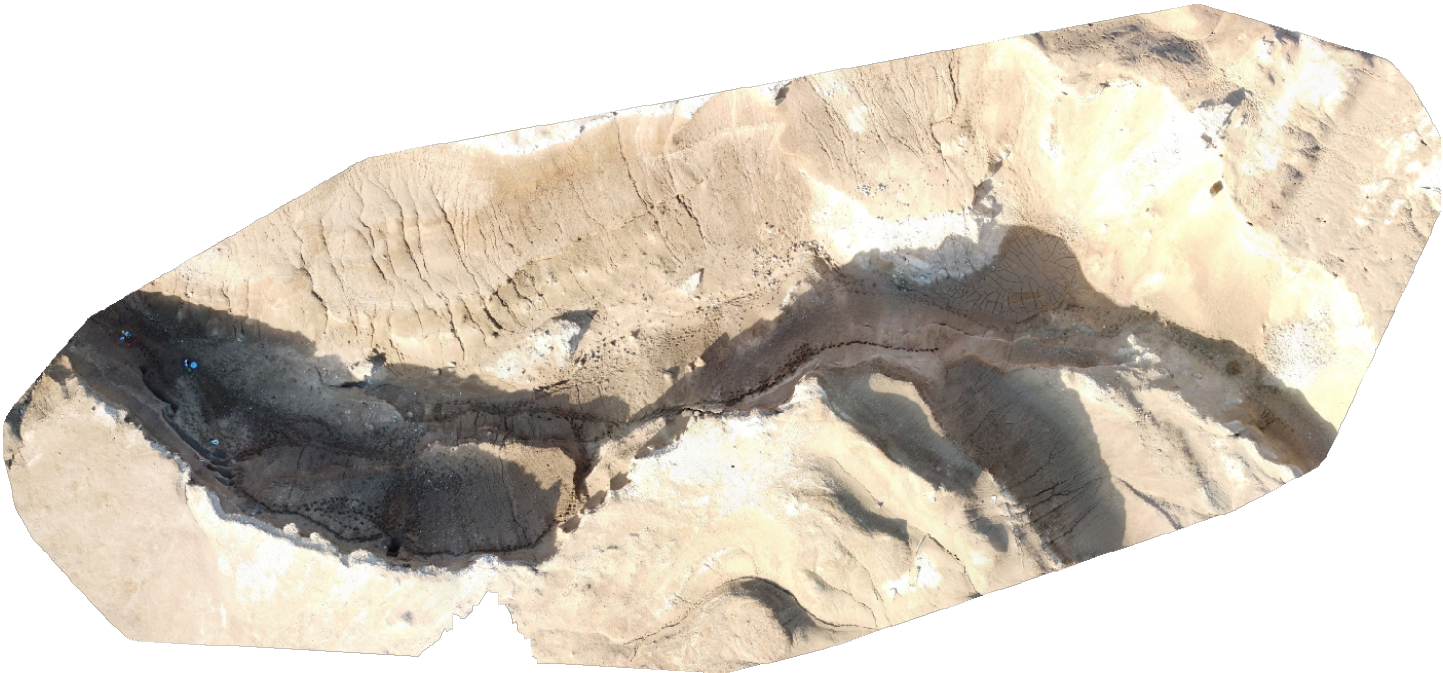
Date	04/02/2023 at 04:54:19
Area Covered	0.006154 km²
Processing Time	5.0m:13.0s
Capture Start	03/02/2023 at 14:35:16
Capture End	03/02/2023 at 14:40:43

## Processing Summary

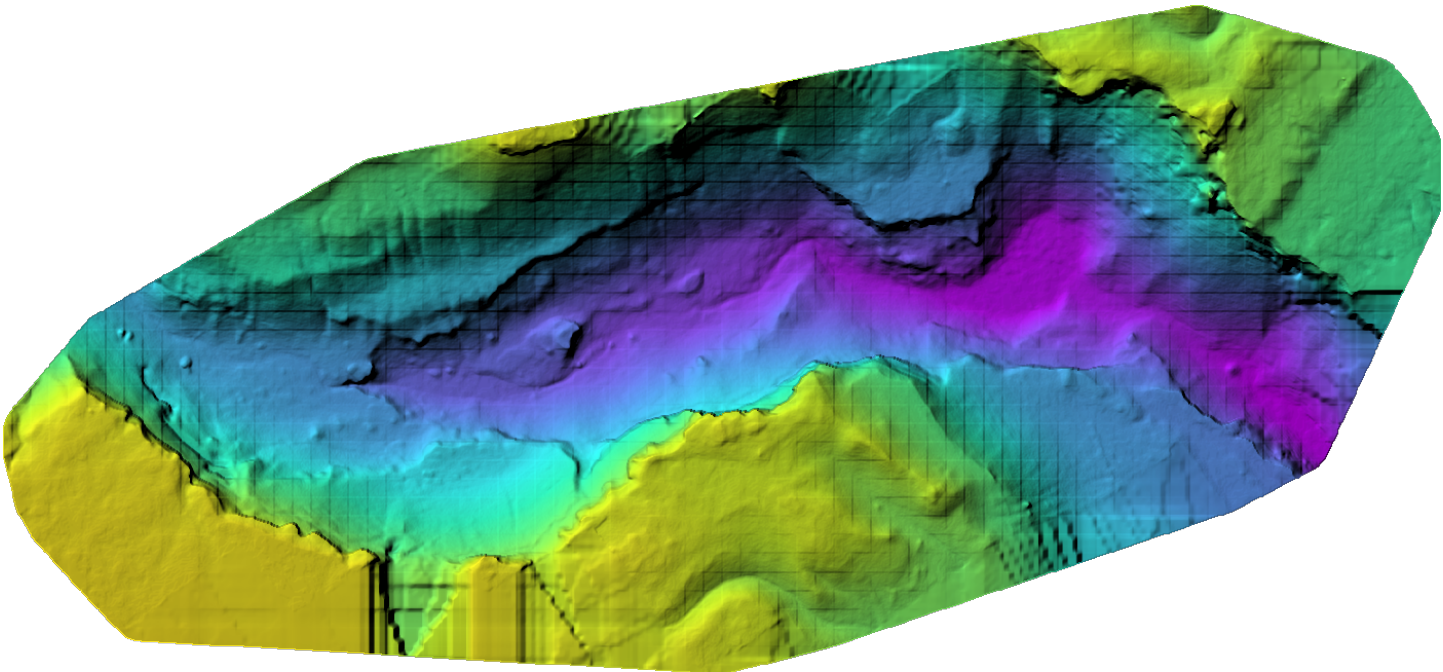
Reconstructed Images	31 over 31 shots (100.0%)
Reconstructed Points (Sparse)	42470 over 42860 points (99.1%)
Reconstructed Points (Dense)	2,789,472 points
Average Ground Sampling Distance (GSD)	2.7 cm
Detected Features	8,510 features
Reconstructed Features	4,466 features
Geographic Reference	GPS
GPS errors	0.56 meters



Previews



Orthophoto



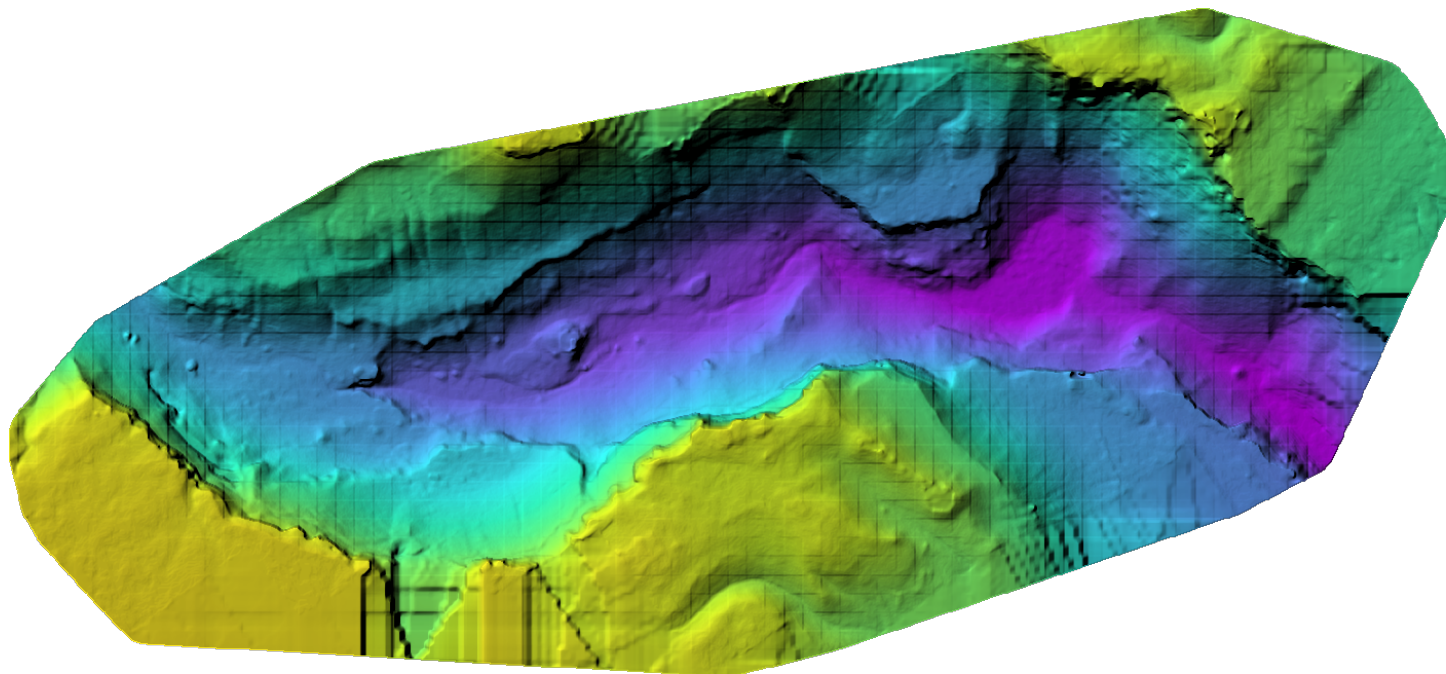
Digital Surface Model



-476.83m

-462.42m

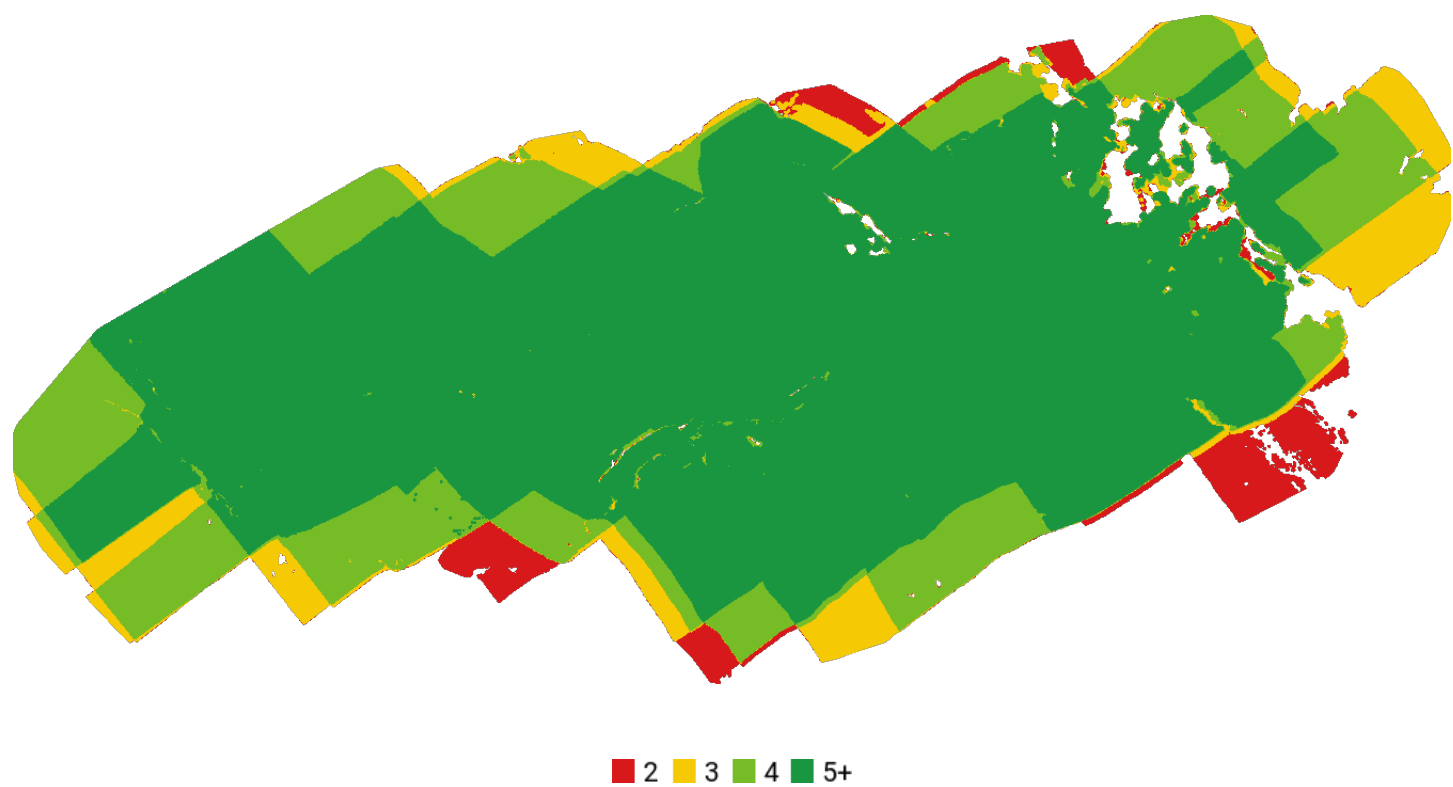




Digital Terrain Model



# Survey Data



## GPS/GCP/3D Errors Details

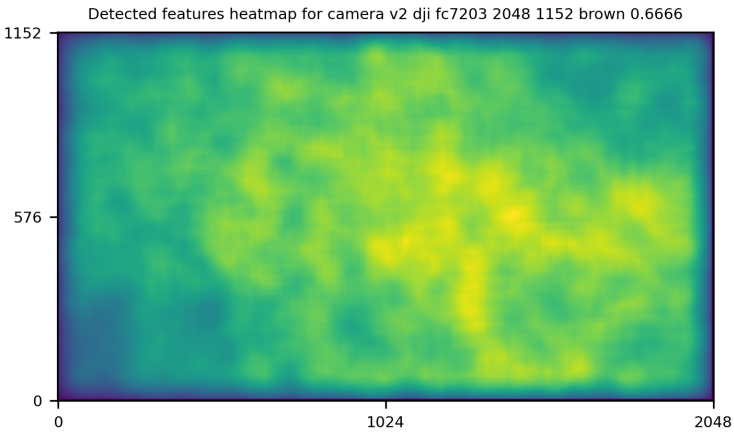
GPS	Mean	Sigma	RMS Error
X Error (meters)	0.010	0.278	0.278
Y Error (meters)	-0.014	0.282	0.282
Z Error (meters)	-0.008	0.482	0.482
Total			0.555

3D	Mean	Sigma	RMS Error
X Error (meters)	0.009	0.015	0.018
Y Error (meters)	0.009	0.011	0.014
Z Error (meters)	0.019	0.030	0.036
Total			0.025

	Absolute	Relative
Horizontal Accuracy CE90 (meters)	0.554	0.029
Vertical Accuracy LE90 (meters)	0.670	0.054



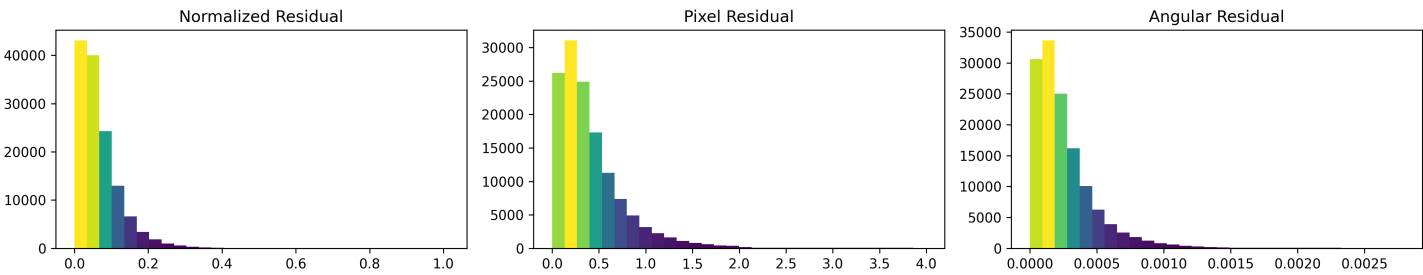
# Features Details



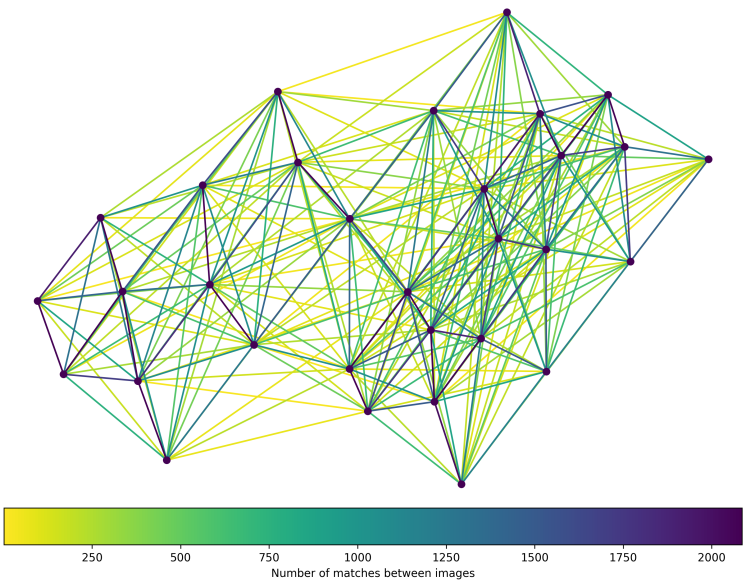
	Min.	Max.	Mean	Median
Detected	7905	9926	8682	8510
Reconstructed	2263	5525	4367	4466

# Reconstruction Details

Average Reprojection Error (normalized / pixels / angular)	0.07 / 0.43 / 0.00027
Average Track Length	3.19 images
Average Track Length (> 2)	4.50 images



# Tracks Details



Length	2	3	4	5	6	7	8	9	10
Count	22291	8263	4740	2741	1627	1079	676	464	275

# Camera Models Details

v2 dji fc7203 2048 1152 brown 0.6666

	k1	k2	k3	p1	p2	focal	aspect_ratio	cx	cy
Initial	0.0000	0.0000	0.0000	0.0000	0.0000	0.6667	1.0000	0.0000	0.0000
Optimized	-0.0129	0.0508	-0.0327	0.0020	0.0005	0.6889	1.0000	-0.0007	0.0185

