

# ODM Quality Report

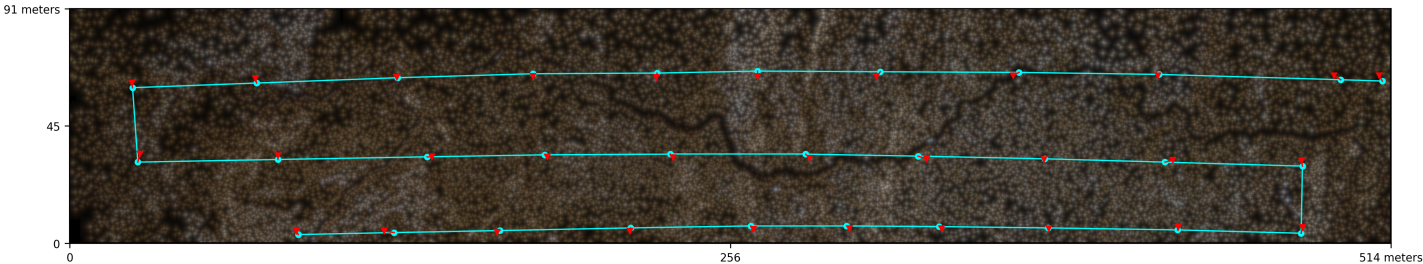
Processed with ODM version 3.0.1

## Dataset Summary

Date	11/02/2023 at 15:46:35
Area Covered	0.030805 km²
Processing Time	3.0m:56.0s
Capture Start	11/02/2023 at 16:00:08
Capture End	11/02/2023 at 16:05:51

## Processing Summary

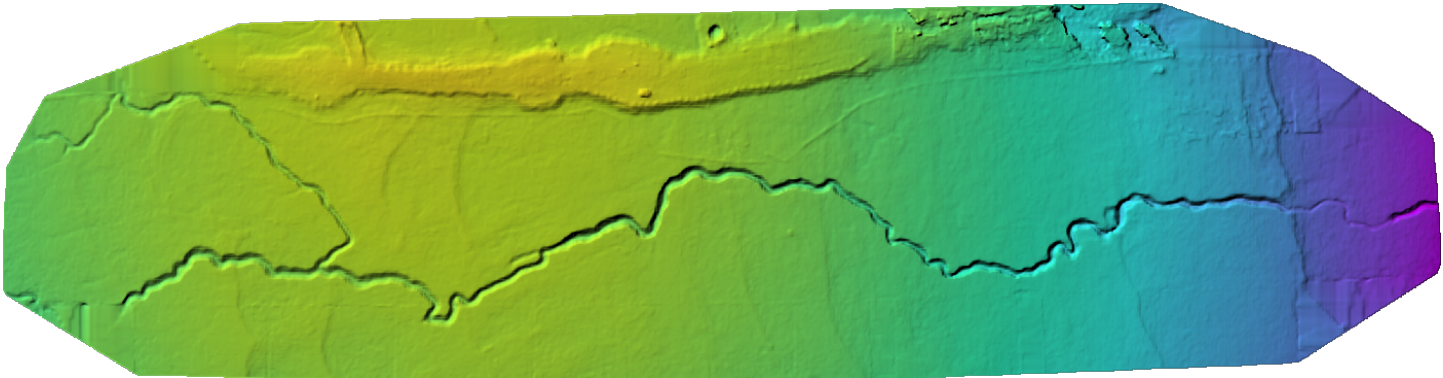
Reconstructed Images	31 over 31 shots (100.0%)
Reconstructed Points (Sparse)	47566 over 47814 points (99.5%)
Reconstructed Points (Dense)	3,269,781 points
Average Ground Sampling Distance (GSD)	7.8 cm
Detected Features	8,789 features
Reconstructed Features	5,069 features
Geographic Reference	GPS
GPS errors	2.47 meters



Previews



Orthophoto

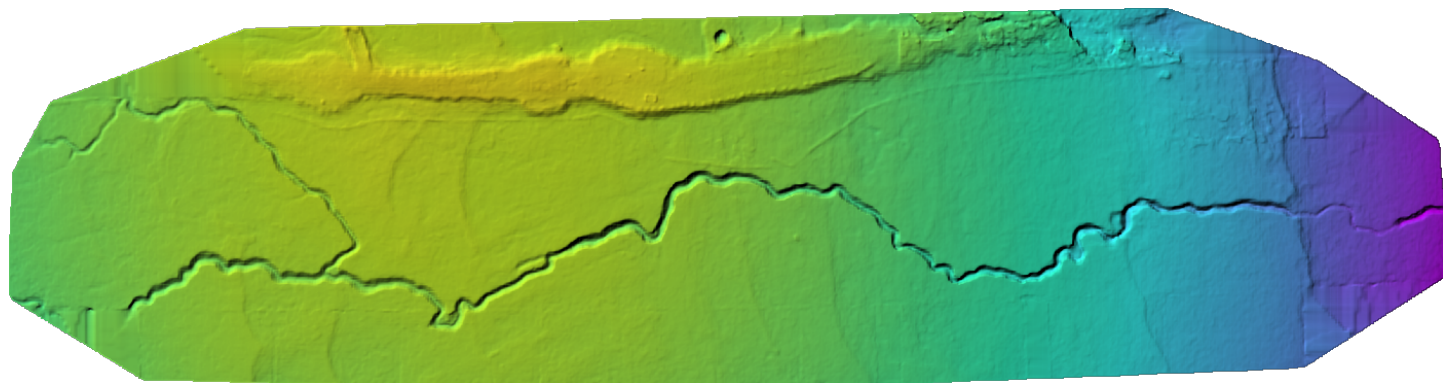


Digital Surface Model



-426.16m

-405.90m



Digital Terrain Model



# Survey Data



2 3 4 5+

## GPS/GCP/3D Errors Details

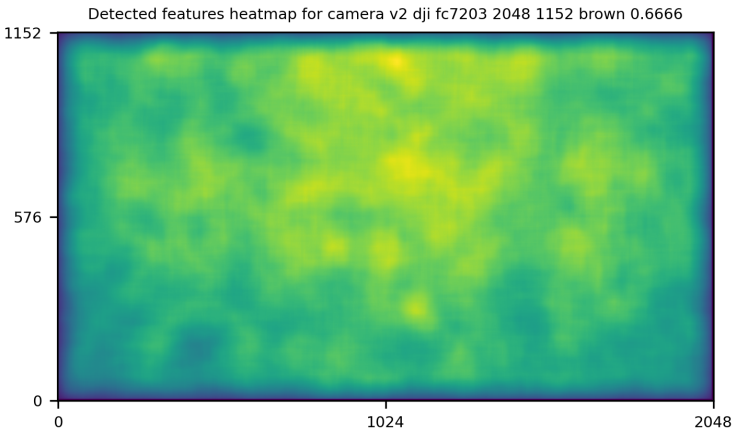
GPS	Mean	Sigma	RMS Error
X Error (meters)	-0.020	1.464	1.465
Y Error (meters)	0.020	1.411	1.411
Z Error (meters)	-0.001	1.804	1.804
Total			2.469

3D	Mean	Sigma	RMS Error
X Error (meters)	0.022	0.031	0.038
Y Error (meters)	0.024	0.030	0.038
Z Error (meters)	0.060	0.104	0.120
Total			0.075

	Absolute	Relative
Horizontal Accuracy CE90 (meters)	3.031	0.074
Vertical Accuracy LE90 (meters)	2.632	0.146



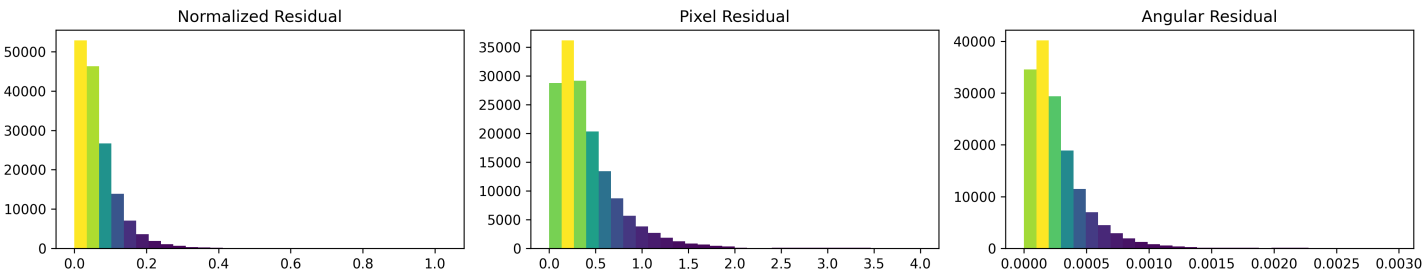
# Features Details



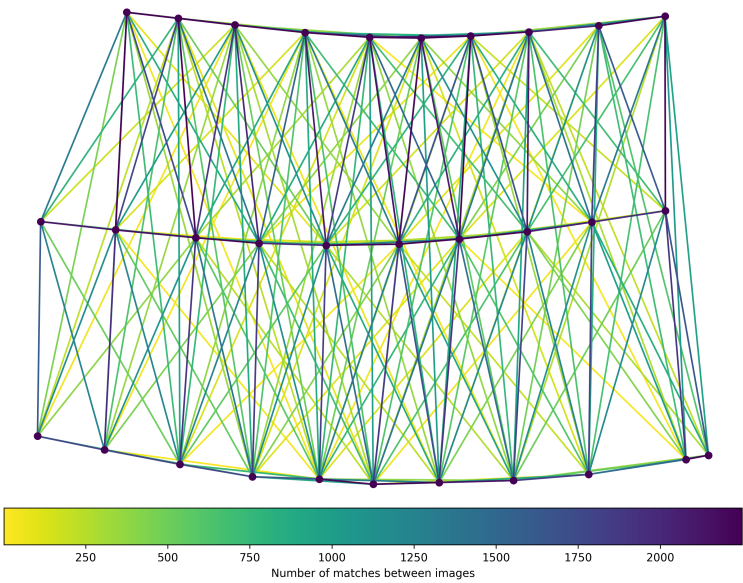
	Min.	Max.	Mean	Median
Detected	8018	10065	8904	8789
Reconstructed	2997	6035	5031	5069

# Reconstruction Details

Average Reprojection Error (normalized / pixels / angular)	0.07 / 0.42 / 0.00027
Average Track Length	3.28 images
Average Track Length (> 2)	4.39 images



Tracks Details



Length	2	3	4	5	6	7	8	9	10
Count	22098	10527	5842	3482	2592	1517	729	463	234

Camera Models Details

v2 dji fc7203 2048 1152 brown 0.6666

	k1	k2	k3	p1	p2	focal	aspect_ratio	cx	cy
Initial	0.0000	0.0000	0.0000	0.0000	0.0000	0.6667	1.0000	0.0000	0.0000
Optimized	-0.0020	0.0546	-0.0352	0.0090	0.0024	0.6536	1.0000	-0.0008	0.0273

