

ODM Quality Report

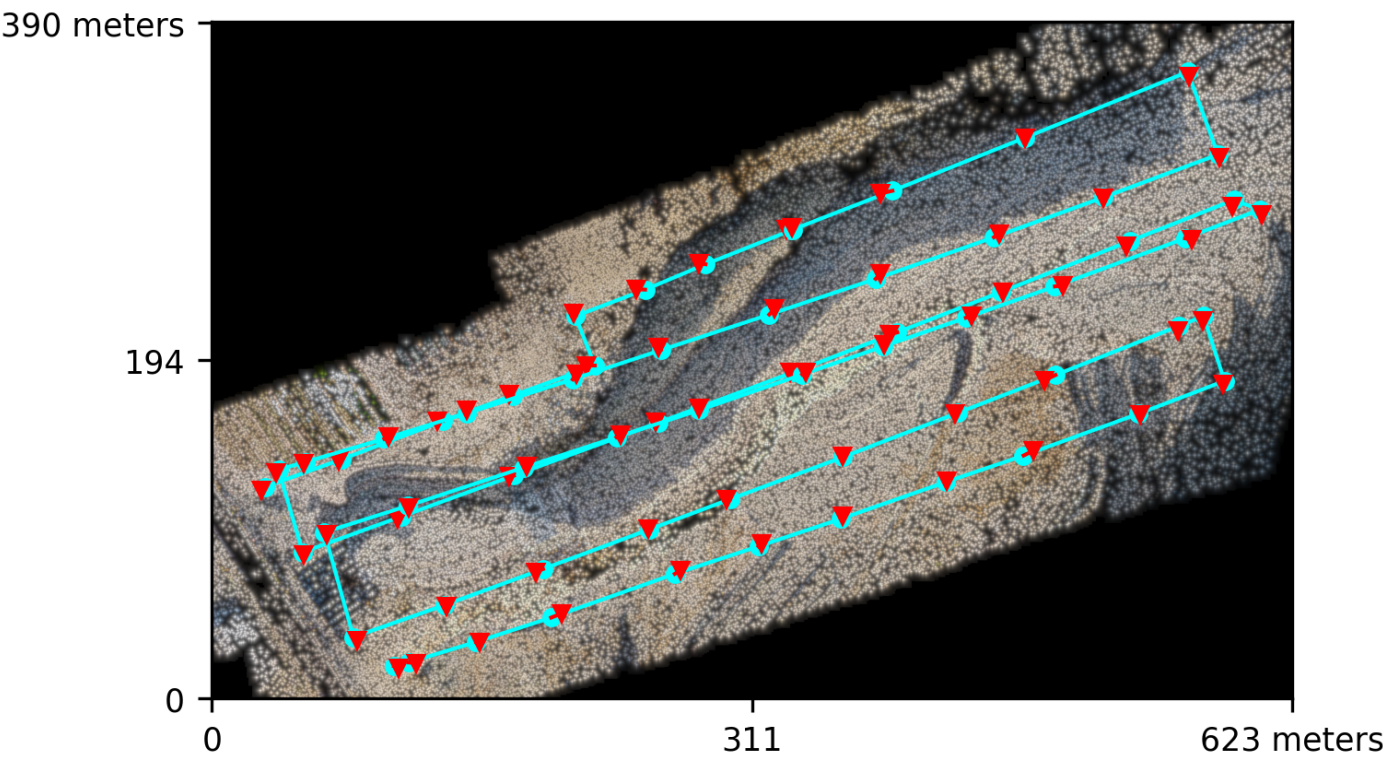
Processed with ODM version 3.0.1

Dataset Summary

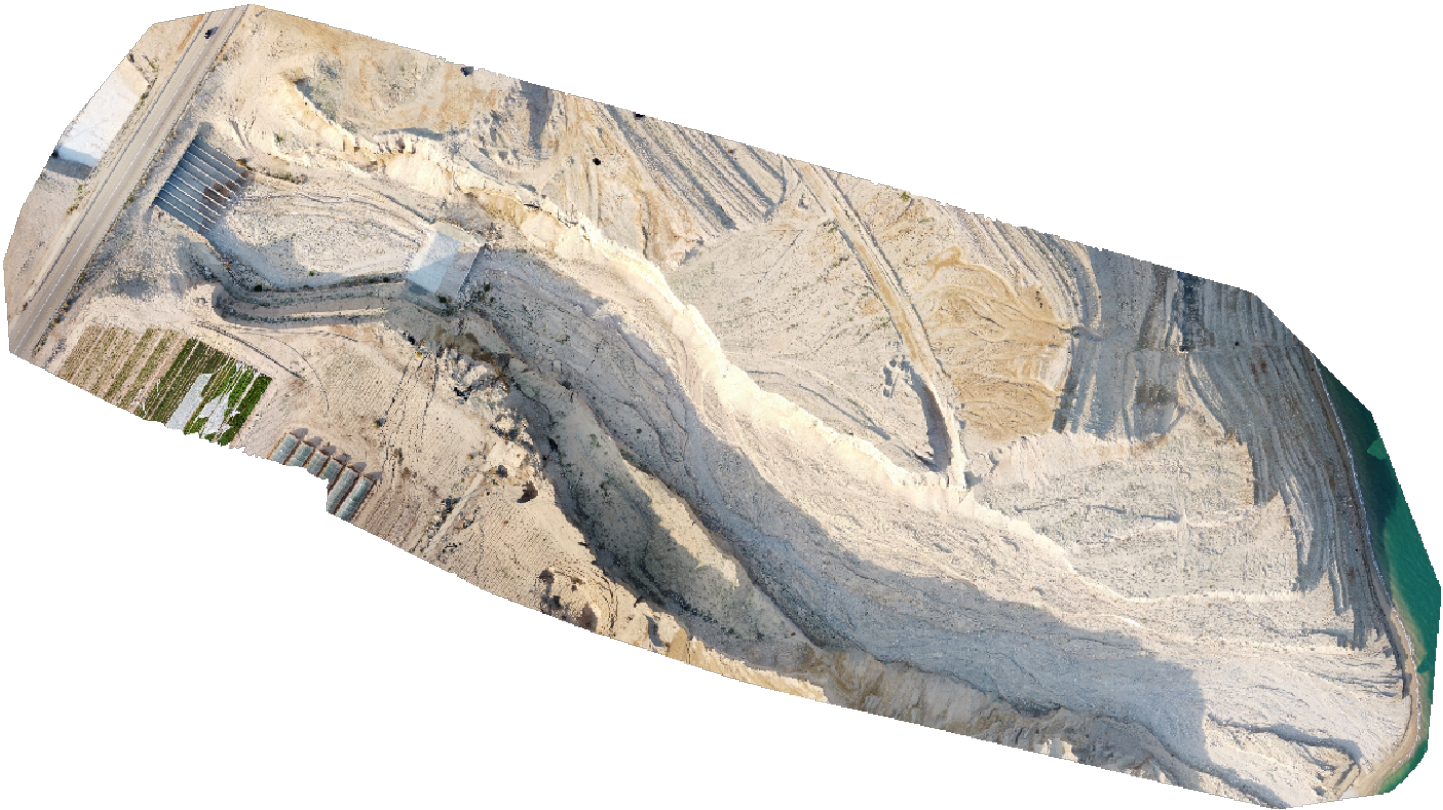
Date	10/02/2023 at 22:08:39
Area Covered	0.196690 km²
Processing Time	12.0m:47.0s
Capture Start	10/02/2023 at 15:47:03
Capture End	10/02/2023 at 15:59:33

Processing Summary

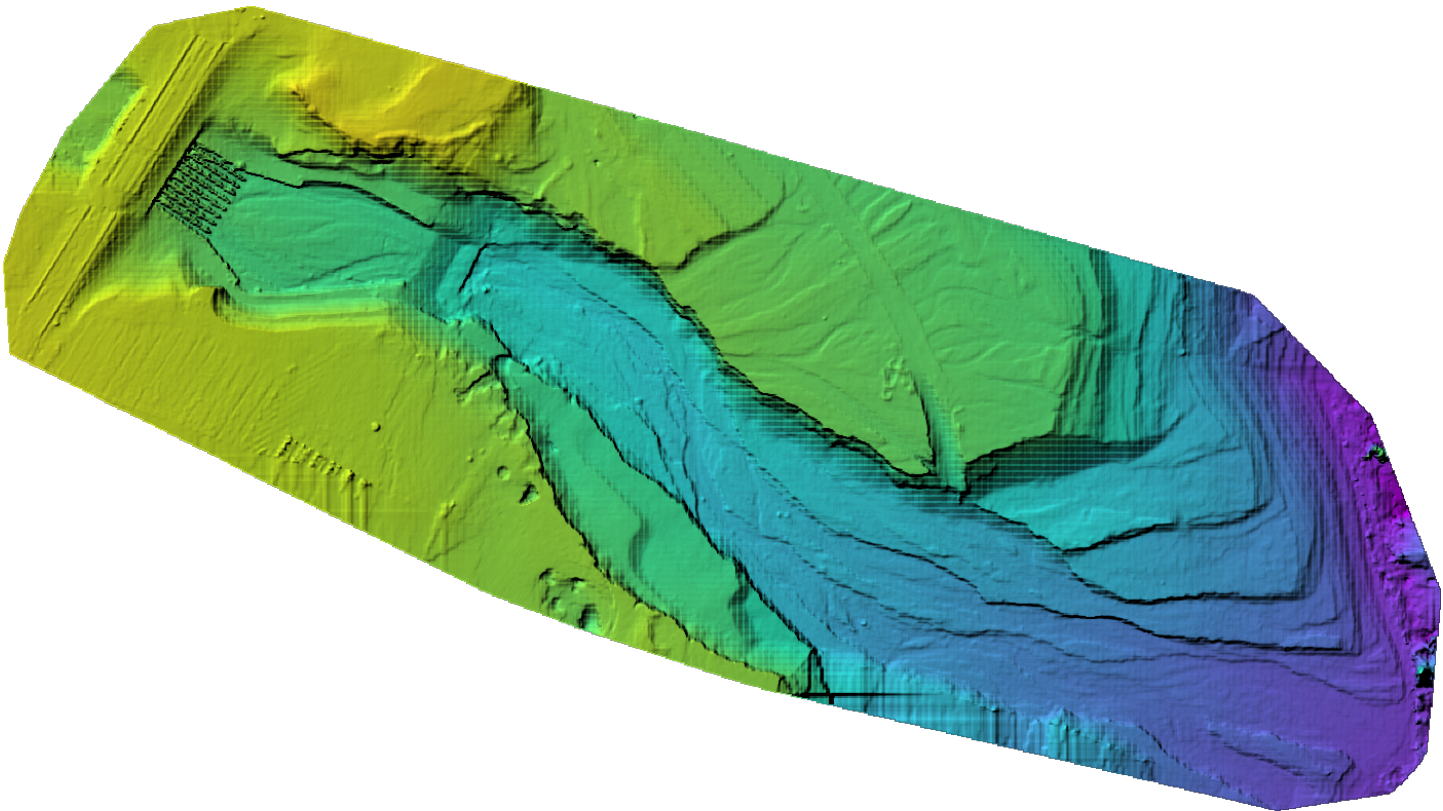
Reconstructed Images	65 over 65 shots (100.0%)
Reconstructed Points (Sparse)	121119 over 122962 points (98.5%)
Reconstructed Points (Dense)	6,939,356 points
Average Ground Sampling Distance (GSD)	8.4 cm
Detected Features	10,188 features
Reconstructed Features	7,326 features
Geographic Reference	GPS
GPS errors	2.75 meters



Previews



Orthophoto

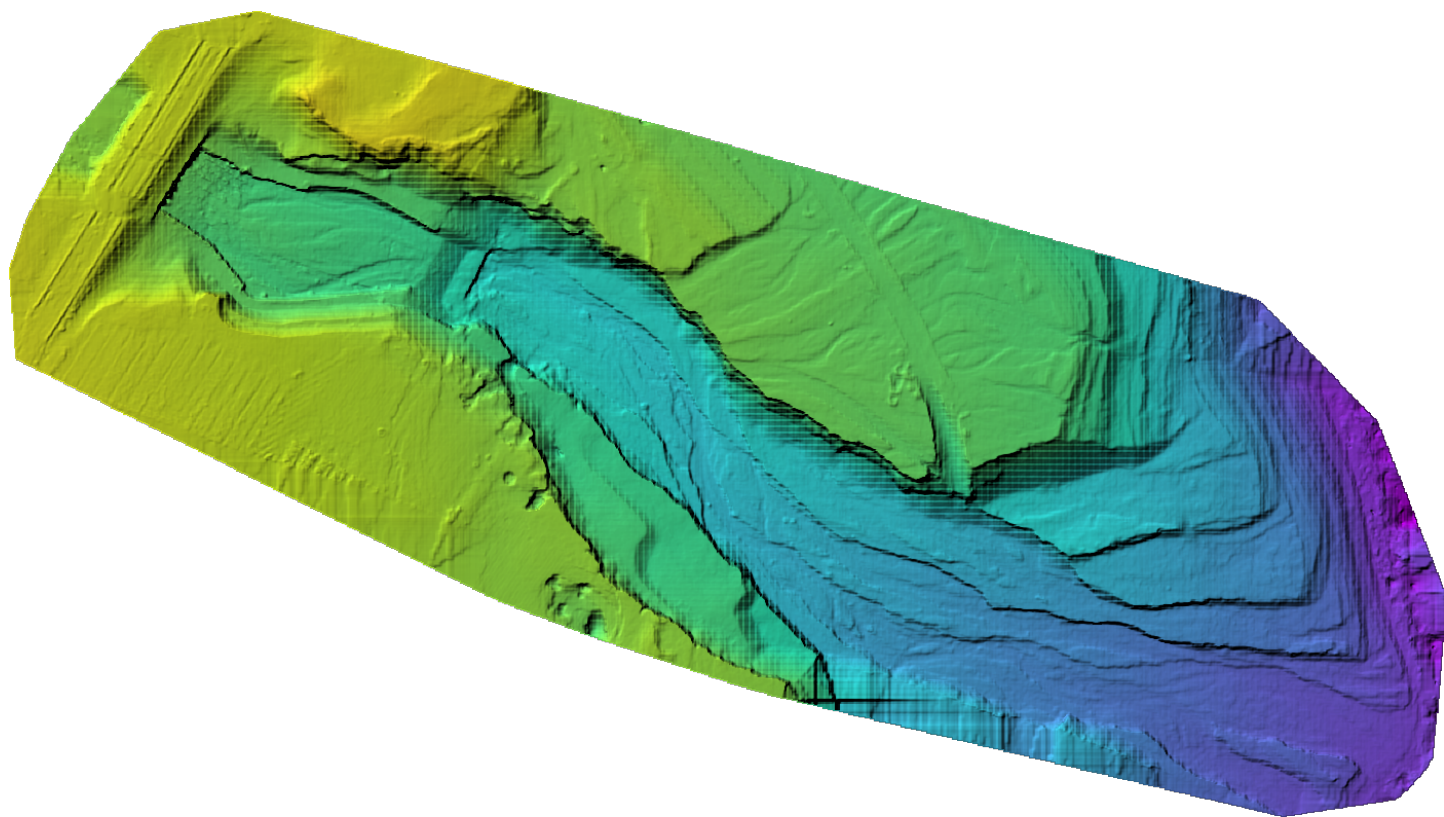


Digital Surface Model



-475.16m

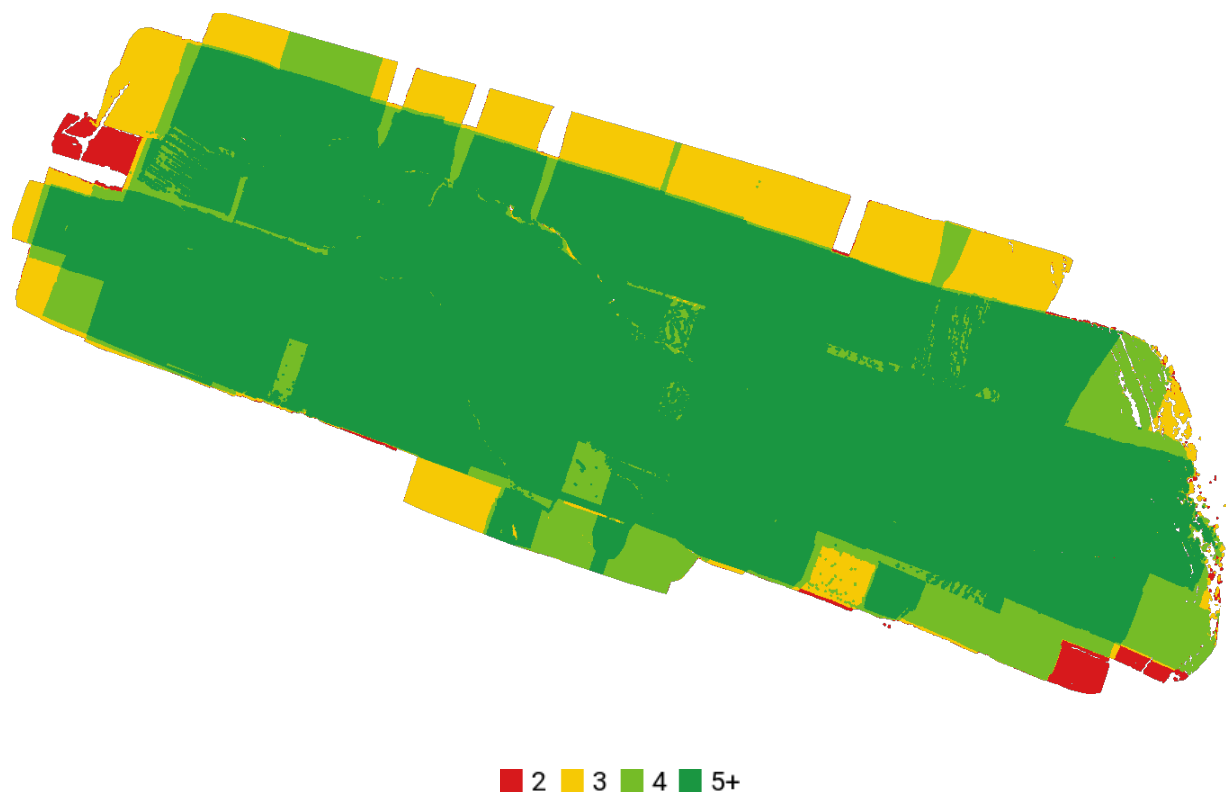
-417.67m



Digital Terrain Model



Survey Data



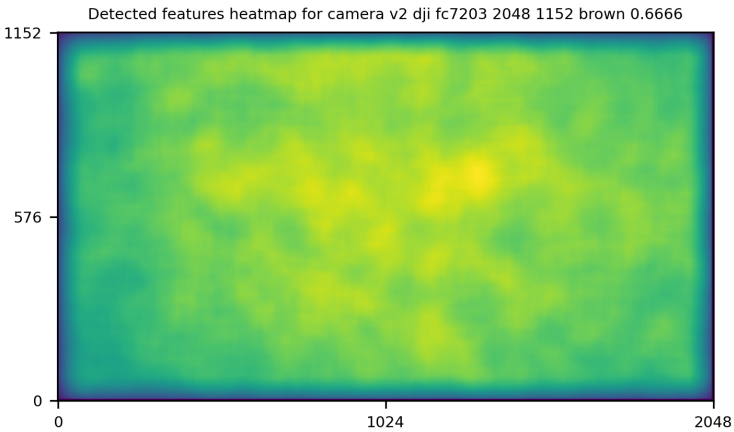
GPS/GCP/3D Errors Details

GPS	Mean	Sigma	RMS Error
X Error (meters)	-0.006	2.703	2.703
Y Error (meters)	0.020	1.613	1.613
Z Error (meters)	0.005	0.338	0.338
Total			2.755

3D	Mean	Sigma	RMS Error
X Error (meters)	0.040	0.078	0.088
Y Error (meters)	0.034	0.045	0.057
Z Error (meters)	0.101	0.232	0.253
Total			0.122

	Absolute	Relative
Horizontal Accuracy CE90 (meters)	4.760	0.100
Vertical Accuracy LE90 (meters)	0.532	0.202

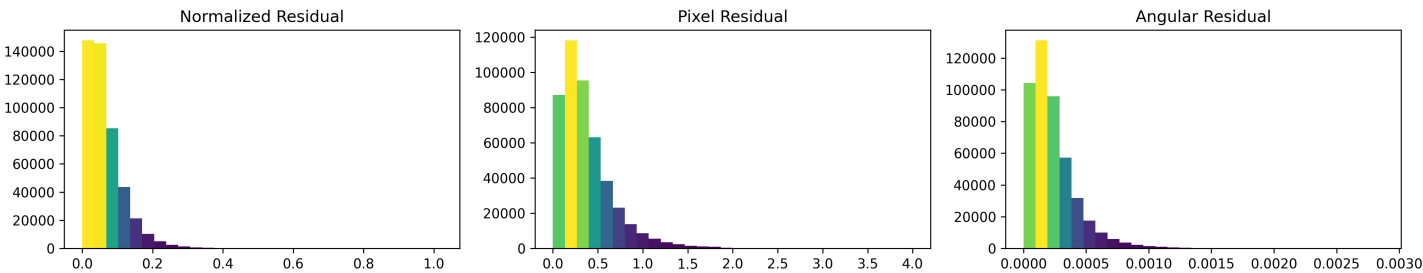
Features Details



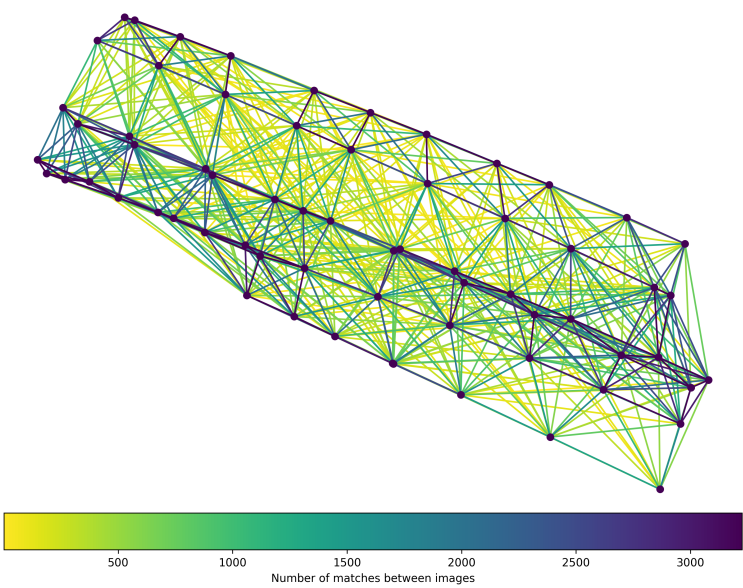
	Min.	Max.	Mean	Median
Detected	9236	11872	10273	10188
Reconstructed	3010	8720	7179	7326

Reconstruction Details

Average Reprojection Error (normalized / pixels / angular)	0.07 / 0.38 / 0.00024
Average Track Length	3.85 images
Average Track Length (> 2)	4.95 images



Tracks Details



Length	2	3	4	5	6	7	8	9	10
Count	45084	25107	15843	11507	7958	5482	3930	2628	1661

Camera Models Details

v2 dji fc7203 2048 1152 brown 0.6666

	k1	k2	k3	p1	p2	focal	aspect_ratio	cx	cy
Initial	0.0000	0.0000	0.0000	0.0000	0.0000	0.6667	1.0000	0.0000	0.0000
Optimized	-0.0208	0.0877	-0.0691	0.0050	-0.0005	0.6778	1.0000	0.0059	0.0098

