

ODM Quality Report

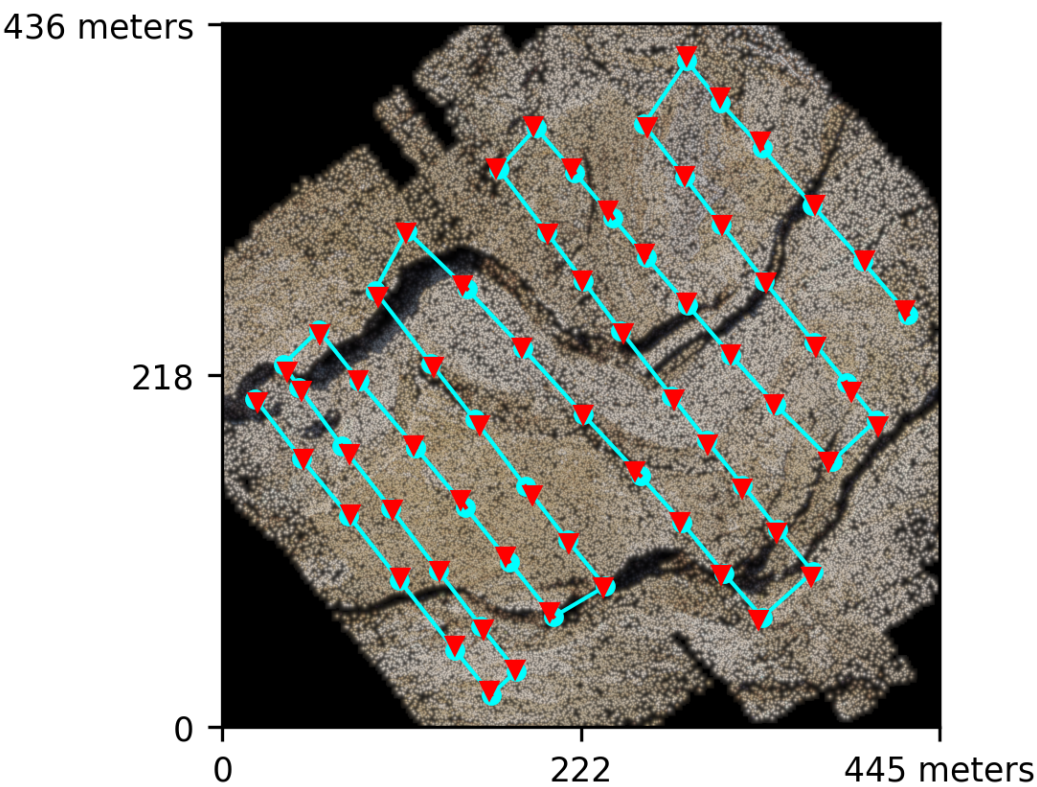
Processed with ODM version 3.0.1

Dataset Summary

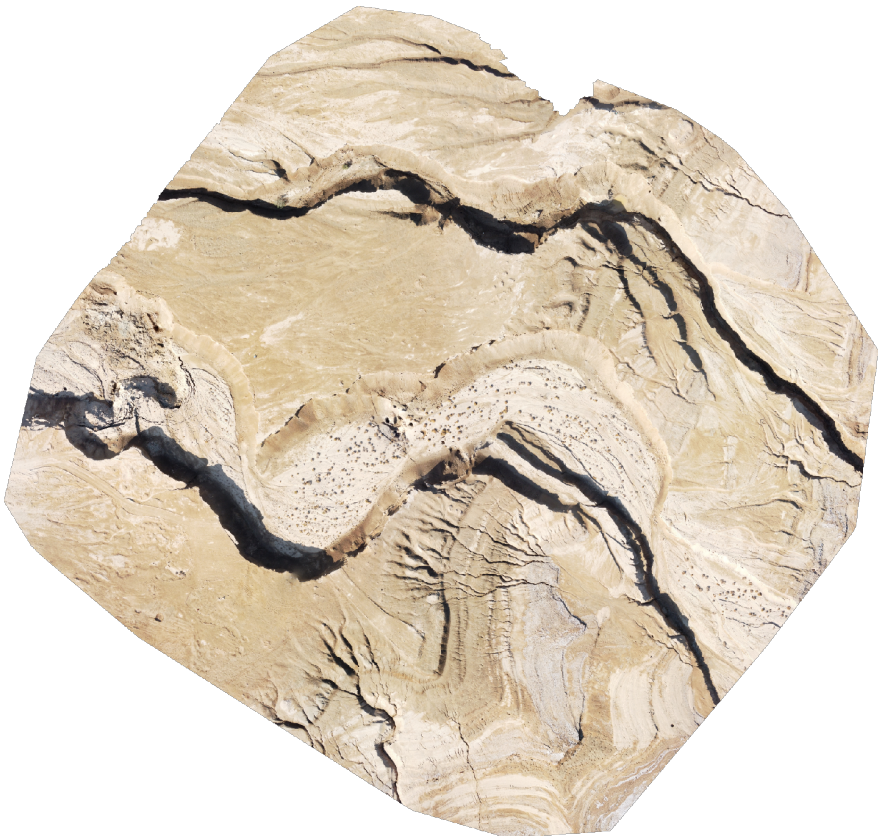
Date	10/02/2023 at 21:37:16
Area Covered	0.159259 km²
Processing Time	8.0m:55.0s
Capture Start	10/02/2023 at 14:31:15
Capture End	10/02/2023 at 14:41:48

Processing Summary

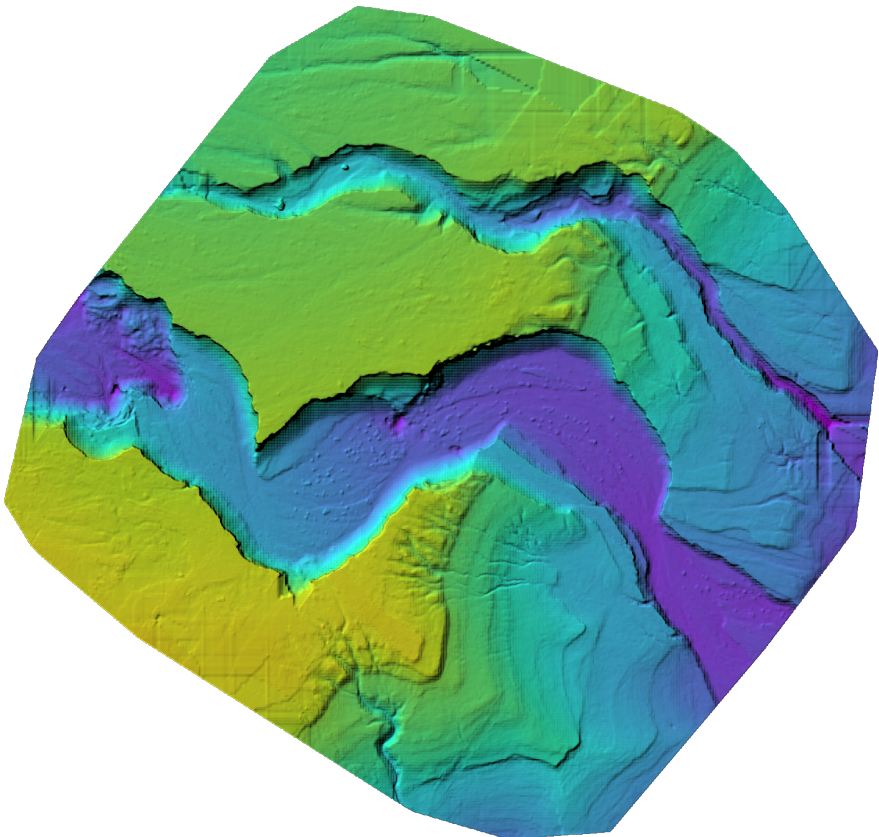
Reconstructed Images	64 over 64 shots (100.0%)
Reconstructed Points (Sparse)	124570 over 125374 points (99.4%)
Reconstructed Points (Dense)	6,970,752 points
Average Ground Sampling Distance (GSD)	8.3 cm
Detected Features	10,096 features
Reconstructed Features	6,936 features
Geographic Reference	GPS
GPS errors	2.65 meters



Previews

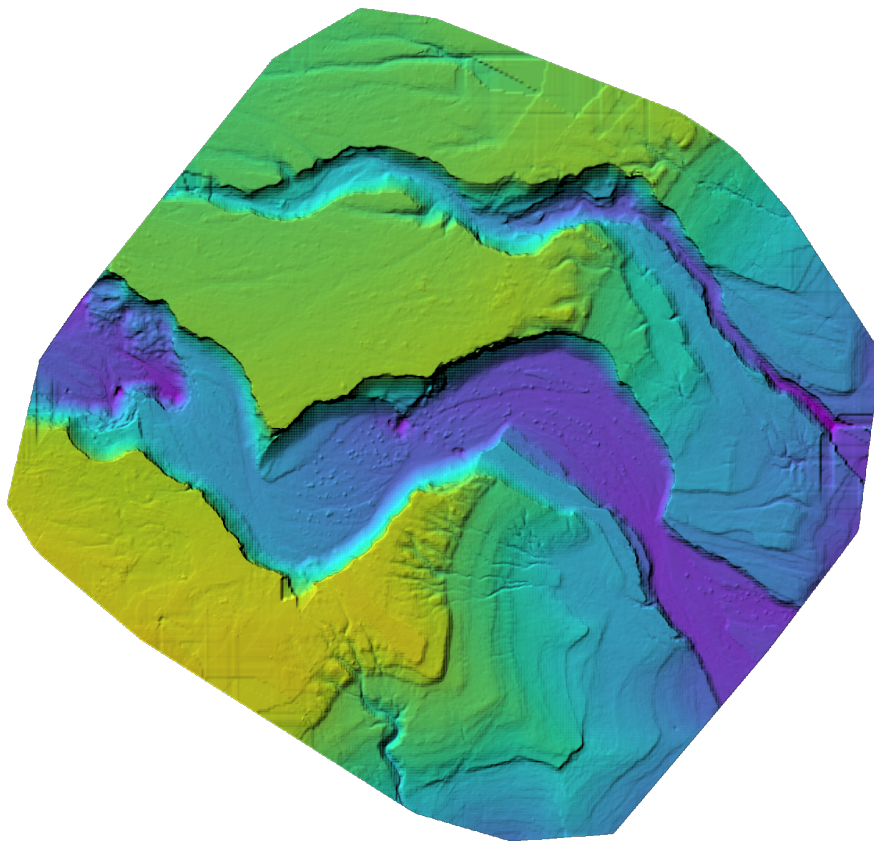


Orthophoto



Digital Surface Model





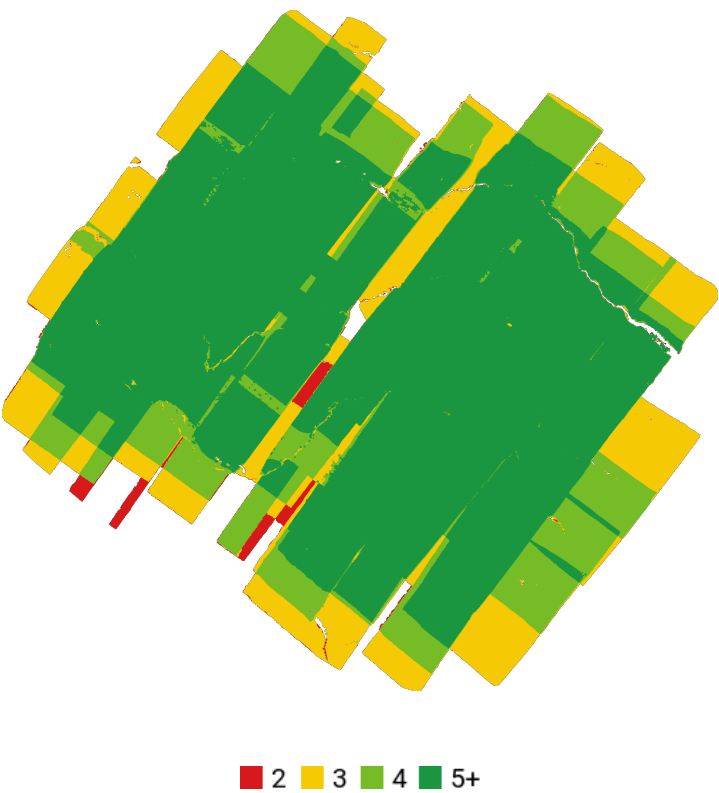
Digital Terrain Model



-460.00m

-440.02m

Survey Data



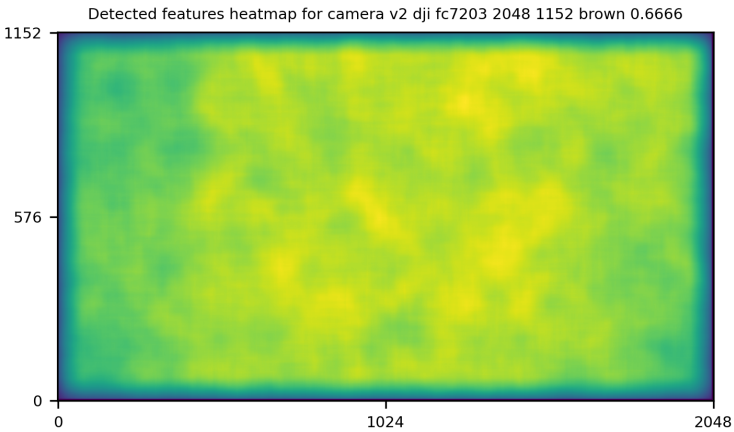
GPS/GCP/3D Errors Details

GPS	Mean	Sigma	RMS Error
X Error (meters)	-0.009	1.760	1.760
Y Error (meters)	0.010	2.430	2.430
Z Error (meters)	-0.024	0.466	0.466
Total			2.648

3D	Mean	Sigma	RMS Error
X Error (meters)	0.027	0.034	0.044
Y Error (meters)	0.028	0.029	0.041
Z Error (meters)	0.067	0.088	0.111
Total			0.083

	Absolute	Relative
Horizontal Accuracy CE90 (meters)	4.465	0.082
Vertical Accuracy LE90 (meters)	0.666	0.150

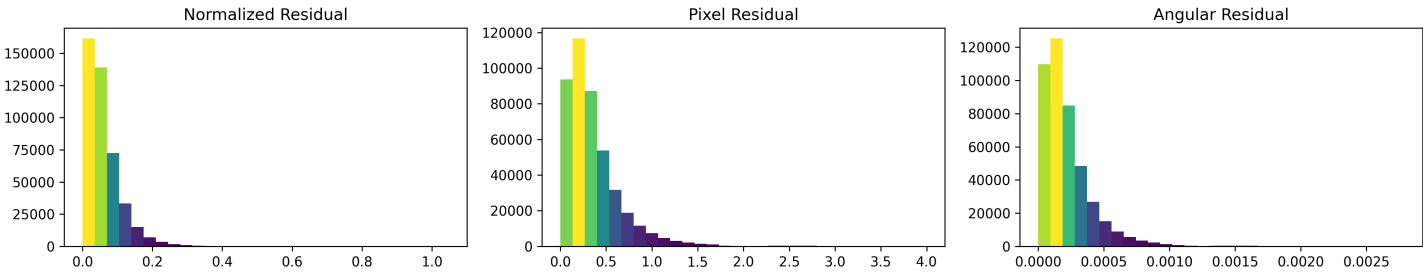
Features Details



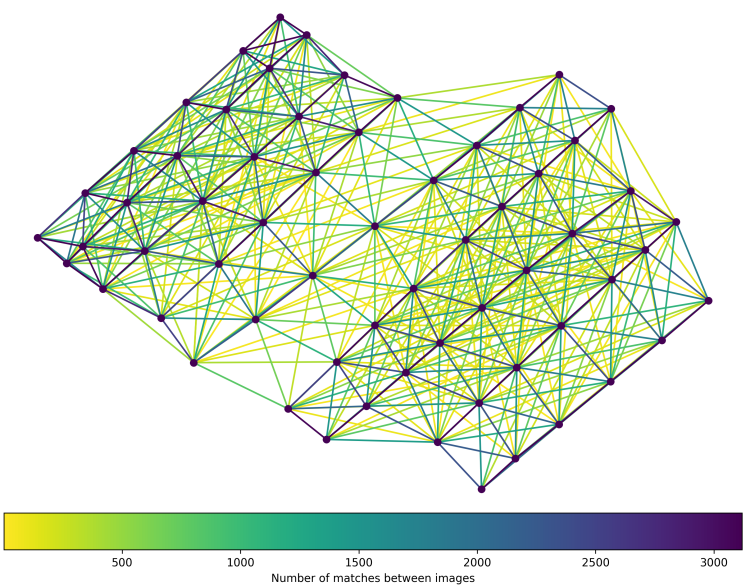
	Min.	Max.	Mean	Median
Detected	9068	10976	10103	10096
Reconstructed	4664	8217	6833	6936

Reconstruction Details

Average Reprojection Error (normalized / pixels / angular)	0.06 / 0.36 / 0.00023
Average Track Length	3.51 images
Average Track Length (> 2)	4.58 images



Tracks Details



Length	2	3	4	5	6	7	8	9	10
Count	51565	26976	16779	10533	7892	5151	3055	1328	736

Camera Models Details

v2 dji fc7203 2048 1152 brown 0.6666

	k1	k2	k3	p1	p2	focal	aspect_ratio	cx	cy
Initial	0.0000	0.0000	0.0000	0.0000	0.0000	0.6667	1.0000	0.0000	0.0000
Optimized	-0.0224	0.0844	-0.0662	0.0087	-0.0015	0.6904	1.0000	0.0062	0.0185

